

**Project** – Car Park

**Location** – Warrington

**Client** – Network Rail

**Product** – Gridforce GF50 Black

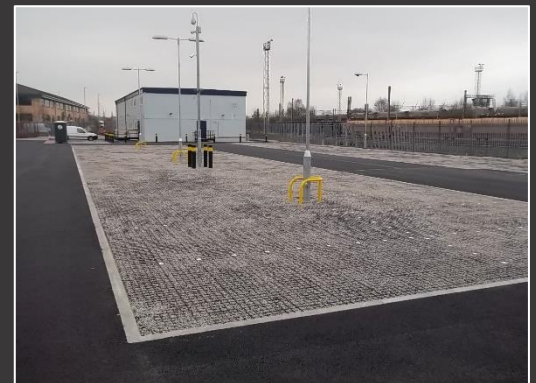
**Quantity** – 1005m<sup>2</sup>

**Project:** Network Rail needed extra parking for their new industrial units alongside the railway track in Warrington. Their main concern was the runoff water from the rail line flooding the new car park beneath, and therefore needed a SuDS compliant solution.

Prior to the work, the area was an un-used grass land comprising of excess soil mounds and weeds.

**Solution:** The land was prepared for laying the grid by removing excess grass land and digging down to the substrate. MOT type 3 was then laid and compacted to provide a firm surface and allow for adequate drainage. A sheet of geotextile membrane was laid on top of the sub-base to prevent any further weed growth and act as a separating layer.

This was then covered with a layer of sand providing a levelling layer and forming a bedding layer for the grid. The GF50 pavers were laid and connected into place to cover the required area. The grid was then in filled with 14mm angular gravel as selected by the client.



**Result:** The installation work on this car park was carried out in December 2012 and within a short space of time the original grass waste land had been transformed and was available for use. The Gridforce ground reinforcement system allows vehicular stability, water infiltration and the reinforced gravelled finish the customer required.



0115 965 7303



[sales@gridforce.co.uk](mailto:sales@gridforce.co.uk)

